



Supaturf



BRITELINER ARROW OPERATOR MANUAL

VITAX LTD



Vitax Limited
Owen Street
Coalville
LE67 3DE
ENGLAND

UK & EC DECLARATION OF CONFORMITY

Herewith we declare that the machinery described below is in accordance with the relevant health and safety requirements of “The Secretary of State” and “The EC Council Directives” concerned with the supply of machinery compatibility. No alterations are to be made to the machine without the prior consultation and approval of Vitax Limited otherwise this Declaration may become invalid. This equipment must be commissioned, used and maintained strictly in accordance with the operating and maintenance instructions issued with the machine. Operators must be trained in accordance with the recommendations given in the operating and maintenance instructions issued with the machine.

Description of machine:	BRITELINER ARROW
Machine Serial number:	As per the build sheet (<i>supplied</i>)
Date of supply:	As per invoice date
Relevant EC Council Directives:	Machinery Directive 2006/42/EC and Subsequent amendments.
Relevant Secretary of State act:	The Supply of Machinery (<i>Safety</i>) Regulations 2008.

Issued on 7th May 2021 by *A. Gurney* on behalf of Vitax Ltd.

Signed - *A. Gurney*

Position of signatory: - *Operations Director*

INTRODUCTION

IMPORTANT - PLEASE READ THIS MANUAL BEFORE USE

This is essential if you are to learn how to operate this equipment correctly. Failure to do so could result in personal injury or equipment damage.

This manual should be considered a permanent part of the equipment and should remain with the machinery if sold on.

INTENDED USE/DISCLAIMER

The Supaturf Briteliner ARROW (the “ARROW”) is designed for use as a line marker, with the intended use for line marking sports fields. Use in any other way is considered as contrary to the intended use. Supaturf accepts no liability for damage or injury resulting from misuse and these risks must be borne solely by the user.

The ARROW should only be operated, serviced and repaired by persons familiar with its characteristics and acquainted with the relevant safety features (accident prevention).

RECOMMENDED PRODUCT LIST FOR THE ARROW

Supaturf Marking Liquids:

SupaStadia AF, SupaStadia Eco, SupaStadia, Stadia, Sport, Briteline Plus, Supaturf RTU & Briteline.

Additional liquids: Stadia Colours

Material Safety Data Sheets for the above products are available on request.

The ARROW is Patent pending.

SECTION 1: INTRODUCTION

Thank you for choosing the ARROW transfer wheel marking system.

It provides a simple to use machine that comes with extra benefits and features. Patent Pending, the ARROW incorporates modern technology with traditional features, uses and economy.

The ARROW offers the ease of use that is associated with transfer wheel marking with added features: light weight design, tip tank to empty, removable tank for ease of cleaning, greater ground clearance and longer wheel base over the traditional box marker for greater control and stability in operation and fully replaceable parts.

The contents of this manual are designed to guide you through the operation of the ARROW, from initial set up, to cleaning, to using and then storing. We strongly advise that this manual is carefully read before first use.

SECTION 2: SETTING UP

The ARROW comes with the handle folded down in the storage/transport position. The handle has 3 height adjustment points, for the ease of use and comfort of the operator.

1. Remove the ARROW from the box in which it is delivered. Due to its light weight, only one person is required to lift it from the box.
2. Undo the hand wheels located on either side of the handlebar brace.
3. Fold the handle upwards until the swaged section of the handlebar locates onto the round tube of the side frame.
4. Retighten the hand wheels to lock the handlebars in position.
5. **To adjust the height:** Undo and remove the hand wheels.
6. Remove the handlebars from the main frame.
7. Locate the holes on the swaged part of the handle, at the desired height, over the exposed ends of the bolts at the top of the main frame.
8. Replace the hand wheels over the bolts and tighten them in place to secure the handle in the upright position.



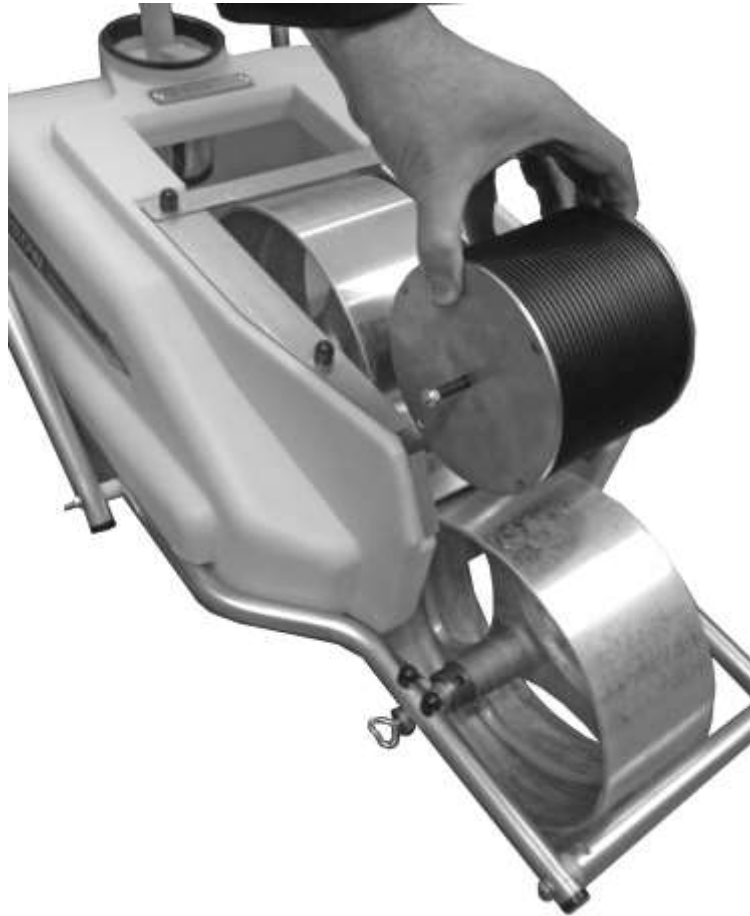
Arrow with handle folded



Arrow handle adjustment positions

SECTION 3: PREPARATION FOR MARKING

The ARROW arrives fully built, so all you need to do is place the transfer wheel in to position and it is ready for use.



1. Setting the desired line definition:

It is possible to change the pressure on the centre transfer wheel and to adjust the definition of the line being marked. The centre transfer wheel can be taken apart and weight can be added by wrapping lead around the centre spindle to obtain the desired line definition. Once this is set initially, it will not be necessary to do this again.



Unscrew Side plate



Remove side brace for easy access

2. Locking the tank in position for marking:

The tank of the ARROW must be clipped firmly in the down position before marking commences. This is done using the hook and lug moulding on the side of the tank. Ensure that the centre transfer wheel engages properly with the front aluminium transfer wheel on the grass surface and remains engaged during use.

NOTE: It is important that the tank is clipped tightly onto the chassis. Failure to do so may result in inaccurate line definition and may cause the transfer wheel to slip.



3. Scraper:

The ARROW comes with a scraper unit underneath and behind the front aluminium wheel. The scraper should be located in place prior to marking to ensure that no grass clipping or leaves etc can be picked up by the front aluminium wheel and returned to the tank. This will not damage the machine in any way but may affect the quality of the finished line if grass clippings are allowed onto the centre transfer wheel.

The scraper is mounted on a pivot that will allow it to be adjusted closer and further away from the aluminium wheel. This also allows it to be rotated so that the scraper can be set to effectively scrape the whole surface of the aluminium wheel as it travels past the scraper.

At optimum position, the scraper should be just 'skimming' the front aluminium wheel. It is not advisable to fit the scraper too tightly to front aluminium wheel, as this may cause drag and affect machine performance. Unlock the tank and put it into the upright position to access the scraper unit.

Note: Always take care if line marking liquid is present in the tank when raising the tank into any other position other than fully down.



4. Centre transfer wheel guide:

The centre transfer wheel is designed to roll freely to prevent any drag or resistance when marking lines. The centre transfer wheel is factory set to be perfectly in line with the internal and external aluminium transfer wheels.



Arrow cartridge system



Arrow protective front bumper

Additional feature:

The ARROW has a fixed bar across the front of the main chassis which acts as a front bumper giving added protection to the front aluminium wheel e.g. should the ARROW inadvertently be pushed against a goal post, the front bumper, and not the aluminium wheel will absorb the impact. This prevents damage to the surface of the aluminium wheel, which would otherwise impair the quality of the marked line.

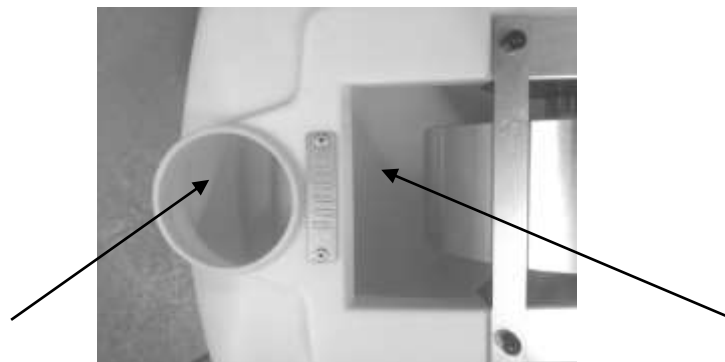
SECTION 4: MARKING LINES

1. Filling the tank:

The ARROW is now ready to be filled with line marking liquid and lines to be applied. The ARROW has double apertures on the top of the tank. The main aperture is for filling the machine with line marking liquid, and the smaller round aperture is for emptying. Using any one of the Supaturf line marking liquids, generously shake the drum, then empty the contents into the main tank. The tank capacity is 14 litres of line marking liquid, though it is recommended to only load approximately 12.5 litres, as the liquid may spill in the tank if it is completely filled.

Ensure that the tank is locked in the fully down position and push the machine forwards. The internal aluminium wheel will load with line marking liquid, which then transfers to the centre wheel and then onto the front aluminium wheel. At this point, the line marking liquid will begin to be marked onto the grass surface. Initially, the line will appear to have striping and will blend into a solid line as the line marking liquid dries.

The ARROW machine is angled very slightly towards the front of the machine. This ensures that the line marking liquid is always flowing towards the front end, where the internal aluminium transfer wheel picks up the line marking liquid and transfers it to the other wheels. The internal aluminium wheel sits as close to the bottom of the tank as possible. This enables the ARROW to mark lines with just half a litre of line marking liquid in the tank, minimising any wastage at the end of use.



Arrow emptying aperture

Arrow filling aperture

2. Marking straight lines:

The ARROW has a long and wide wheelbase. This gives the machine greater accuracy and control over straight lines. The ARROW has a newly designed handlebar that gives the operator better grip and control over the machine.

3. Marking circles/semi circles:

The ARROW has an eyelet attachment fitted into the front axle. This allows a string line to be attached to the machine for circle marking. A string, set to the desired length can be attached to a spike and placed in the centre of where the circle is required and the other end of the string is tied to the eyelet on the ARROW. Keeping the string taut, the string will pull the ARROW in a circle as the machine is pushed along.



4. Spot marking:

The ARROW comes equipped with a spot marking brush. This brush is housed in its own drip filter that fits into the tank-emptying aperture at the rear of the machine. The spot brush can be used to mark areas of the pitch with ease, such as the centre and penalty spots on a soccer pitch and for finishing the line up close to the goal posts. Where the ARROW cannot mark, the spot brush can, thus ensuring that all marking parameters are covered by the ARROW system.

After use, the brush can be returned to its drip filter. This ensures that there is no mess and that any residue of line marking liquid will drip safely into the main tank. The brush can also be used as a cleaning aid for washing down the tank when marking has been completed.



Spot Brush & Drip filter

SECTION 5: EMPTYING AND CLEANING

1. Emptying the ARROW:

The ARROW has a unique tip tank feature that enables quick and effective emptying of the tank. Once marking out has been completed, take a suitable receptacle and place it at the rear of the ARROW. Release the tank from the chassis and raise it so that it is in its upright position. This sees the tank in a completely vertical position and enables any unused line marking liquid to be drained from the tank via the round tank-emptying aperture at the rear and top of the tank. The design of the chassis ensures that, in this position, the tank cannot flip completely through the handle bar assembly and cause any damage to the machine, or create a potential spill of line marking liquid or injure the operator.

Important information:

Depending on the amount of line marking liquid left in the tank after marking has been completed, it may be necessary to ensure a firm hold on the handle of the ARROW when the tank is tipped to the emptying position, to prevent the whole machine tipping over backwards.

After removing as much unused line marking liquid from the tank as possible, the tank can now be removed from the chassis and tipped by hand until any line marking liquid has been drained. Any residue of line marking liquid can be stored; ready for use the next time marking out is undertaken. The tank attaches to the chassis by a hook and lug moulding and simply snaps on and off the rear axle of the main chassis.



ARROW with tank in the raised position for emptying

2. Cleaning the ARROW:

Once any unused line marking liquid has been removed from the tank, the ARROW can now be thoroughly and easily cleaned. The tank is manufactured from rotationally moulded polyethylene plastic and therefore makes the tank durable, lightweight and 100% corrosion free. This also prevents line marking liquid from sticking to its surface and ensures that the tank is easier to clean and to keep clean.

Using fresh, clean water, preferably through a hosepipe to generate natural pressure, the tank should be thoroughly washed down inside and out and any residue line marking liquid removed, ensuring that extra attention is given to the internal aluminium and centre transfer wheels. This can be achieved with the tank in the upright position, so that any waste water immediately runs out of the tank. This should be undertaken in a suitable place and care must be observed to ensure no residue of line marking liquid or washings are allowed to enter a surface water drain.

The chassis can be cleaned down at the same time, to ensure that the external aluminium transfer wheel and scraper are thoroughly cleaned at the same time. The chassis is manufactured from triple coated steel and is highly resistant to corrosion. The use of water to clean the chassis will not be detrimental to the machine.

The tank can be completely removed as described above. This enables the operator to take the tank to a suitable area for thorough cleaning, without the need to transport the entire machine to the cleaning facility. The drip brush can be cleaned alongside the whole process and using it to wipe around the tank will aid the cleaning of both the brush and the tank of the machine.

The centre axle for the internal aluminium wheel is greased during the manufacturing process. This helps to prevent any line marking liquid sticking between the axle and the aluminium wheel. It is recommended that fresh grease be applied to the axle on a monthly basis, to continue to provide this protection. It is not essential to remove the internal aluminium wheel. Simply smooth some grease around the edges of the axle where the aluminium wheel sits and turn the aluminium wheel to spread the grease into the axle itself.

See our demonstration videos at: www.supaturf.co.uk

click :- Demo videos

or scan the QR code below to go straight there



SECTION 6: MAINTENANCE AND REPLACEMENT PARTS

The ARROW is a very low maintenance machine. As long as regular cleaning is undertaken, there should be no issues arising with the machine.

Monthly maintenance should be carried out as follows:

1. Grease the internal aluminium wheel axle
2. Remove the tank and thoroughly clean around the internal aluminium wheel
3. Remove and thoroughly clean the centre transfer wheel and ensure its housing is clean and clear of any residue of line marking liquid
4. Whilst the centre transfer wheel is removed, ensure the drip guard is clean and clear of any residue line marking liquid or debris (grass clippings etc)
5. Thoroughly clean around the scraper unit
6. Check tyre pressure – the tyres of the ARROW are factory set to 20 Psi

PARTS LISTING

PART CODE	PART DESCRIPTION
15119	120mm (5") Aluminium wheel
02024M	120mm (5") Centre transfer wheel
00592	120mm (5") Transfer wheel rubber
00413	100mm (4") Aluminium wheel
02021M	100mm (4") Centre Transfer wheel
00599	100mm (4") Transfer wheel rubber
00415	75mm (3") Aluminium wheel
02022M	75mm (3") Centre transfer wheel
00598	75mm (3") Transfer wheel rubber
15126	Alloy wheel locking ring
15127	8mm Grub screw for alloy wheel locking ring
02041	Scraper plate
15146	New ARROW cartridge (<i>metal plates ONLY!</i>)
15179	ARROW tank
11053	Drain plug bung
15113	Spot brush
12002	Drip filter
13216	Pneumatic wheel
00488	19mm star lock for pneumatic wheel



WWW.SUPATURF.CO.UK

Visit our website for more information on our range of line marking machines and line marking liquids. Also available are informational videos offering demonstrations of Supaturf line marking machines and some trouble shooting guides.

ONLINE SPARE PARTS SERVICE

Comprehensive ranges of spare parts for all Supaturf line marking machines are available. If you require spare parts for your machine, visit the website where you will find a complete listing for each machine.

**Vitax Ltd
Owen Street
Coalville
Leicester
LE67 3DE**

Tel: 01530 510060 Fax: 01530 510299

Email: sales@vitax.co.uk

Web: www.vitax.co.uk